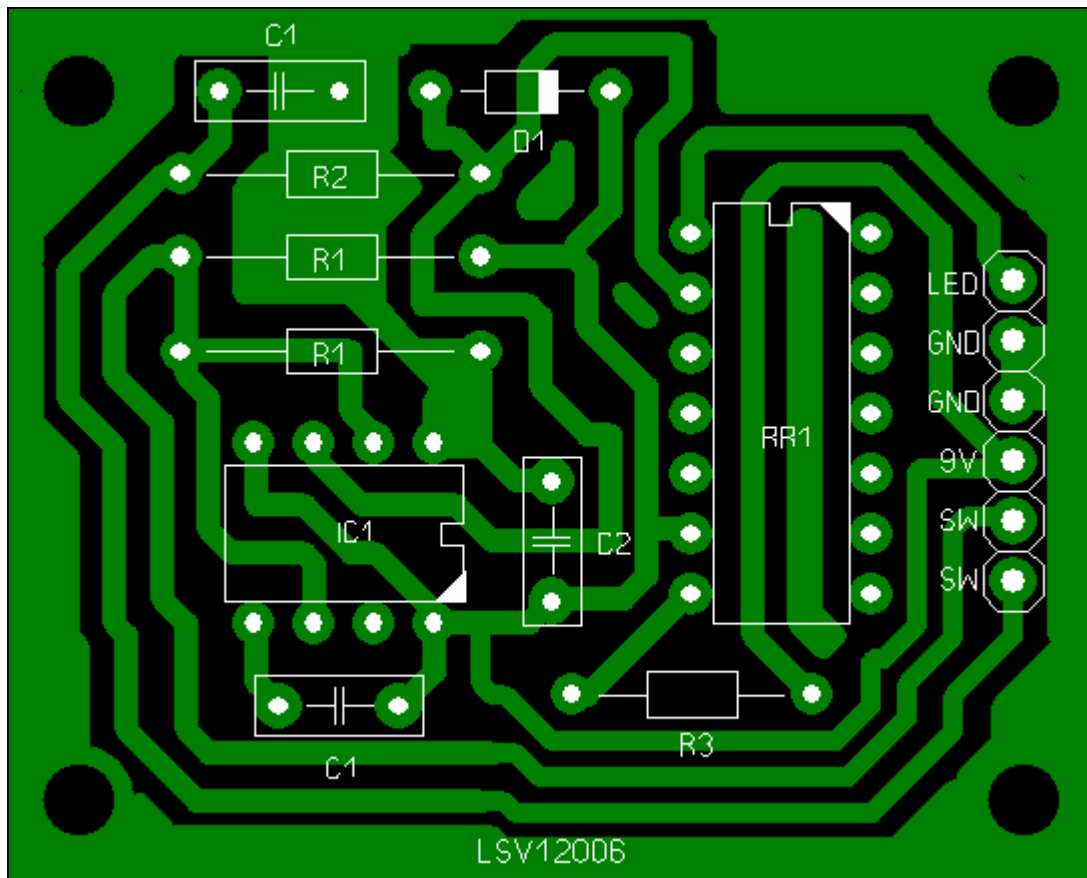


TriAngles™ 3D Scanner LED Latch Circuit Assembly Instructions V1



Notice

The Latch Switch Circuit is no longer required. Its functionality has been integrated into the supplied micro step motor driver. This manual is being supplied for those that intend to build their own turntable using other parts and components.

Disclaimer

TriAngles 3D Scanner LED Latch Circuit Version 1 APPLICATION
TriAngles 3D Scanner LED Latch Circuit Version 1 CIRCUIT DESIGN
Copyright © 2007 IntriCAD NL

This software and publication pertains to the workings, manufacturing, assembly and operation of a machine apparatus. This can be a dangerous undertaking. The use of this software and any information provided is therefore at the users own risk.

In no event shall the author and owner IntriCAD, suppliers nor any related parties that contributed to the creation, marketing and sale of this publication be liable to any party for any direct, indirect, special, punitive or consequential damages (including but not limited to, damages to property, business, person(s), or other pecuniary or loss or claims suits or causes of action involving alleged infringement of copyrights, patents, trademarks, trade secrets, or unfair competition), arising out of the availability, use, reliance on, or inability to use the information contained in this publication.

In addition this applies to any accompanying or further information provided by any means, or any other damage that may result in any way whatsoever, even if this organization or owner shall have been advised of the possibility of such damages, and regardless of the form of action, whether in contract, tort, or otherwise, or for any claim attributed to errors, omissions, or any other inaccuracies in, or destructive properties of any information and/or software/hardware material. The author and owner of this software is under no obligation to provide support, service, corrections, or upgrades to the software programs. This software is supplied "as is" and no warranty of any kind is attributed to it.

It is the responsibility of the reader of this publication and/or user of the included software to determine the integrity and required safety precautions regarding the fabrication techniques, electrical circuits, mechanical construction and software which are described, explained and provided in this Publication and/or software. This project is only for adults with basic understanding of electronics and home machining skills. It is certainly not for children and should be kept out of their reach. If the reader lacks the required skill and/or knowledge to produce and/or operate the apparatus described then he/she should not proceed with this project or should seek professional engineering assistance.

The information and software supplied is for educational purposes and not intended for commercial use. Extensive effort has been undertaken to insure that the information contained in this manual and the supplied software does not breach any currently protected art nor intellectual property. To the best of our knowledge it does not as it is based on technology/art that is now become public domain. However given current practices in industry this cannot be fully ascertained. Use of this software for commercial purposes is at the users own risk.

By proceeding to read or use the information contained in this publication and/or software the user agrees to the above stated.

TriAngles 3D Scanner, Version 1 by IntriCAD
TriAngles 3D Scanner 3D Builder and 3D Viewer IntriCAD

All rights reserved. Information subject to change without notice.

Table of Contents

1. Introduction	1
2. Tools	2
3. Parts List	3
4. General Guidelines	4
5. Assembly	7
6. Testing	7
7. PCB	8
8. Parts Layout	8

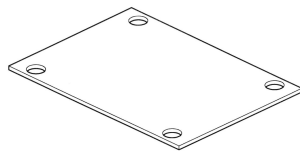
1. Introduction

Making a complete circumference scan of an object requires that it is rotated exactly 360 degrees. This is necessary in order to process the scan correctly. To achieve this, the design uses a LED Latch Circuit. The latch circuit is connected to an indicator LED and a momentary switch (roller snap switch). The turn table disc has a small notch which serves to engage the switch during turning. When this happens the LED will go off. The latch switch prevents the LED from going on again as the disc notch turns past the switch and it disengages. Only after the disc has made a full 360 degree rotation and again engages the switch will the LED turn back on. This is an effective and precise yet very simple way to inform the user when to start and when to stop processing the scan.

2. Tools

1. Soldering Iron with point tip
2. Solder (for electronics)
3. Clipper (for leads)
4. Multimeter
5. Scissors
6. Lighter
7. Screw driver (flat)
8. Wire stripper

3. Parts List



PCB1



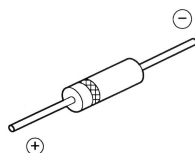
R1



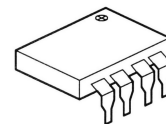
R2



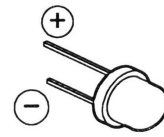
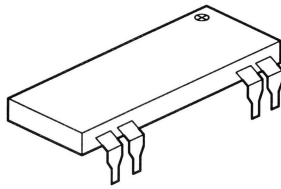
R3



D1



IC1



ERROR: stackunderflow
OFFENDING COMMAND: ~

STACK: